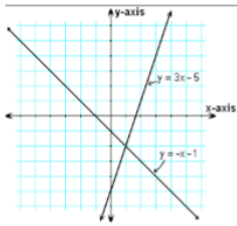
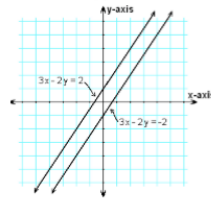


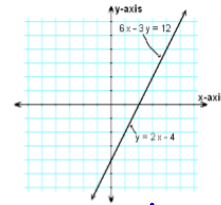
# Systems of Equations



Intersecting Lines  
Consistent &  
Independent



Parallel lines  
Inconsistent

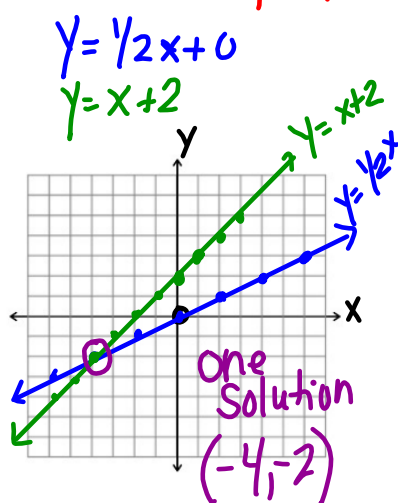


Same Line  
Consistent &  
Dependent

May 4-7:33 AM

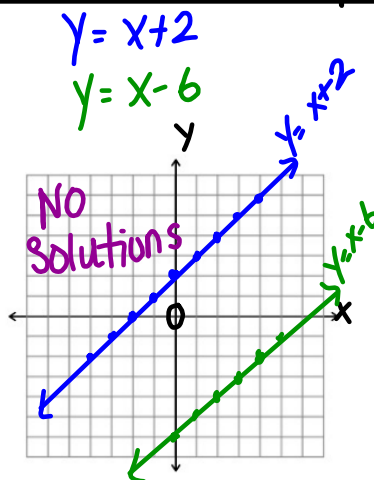
## One Solution

at the ordered pair where the 2 lines intersect  
\* You must state the ordered pair \*



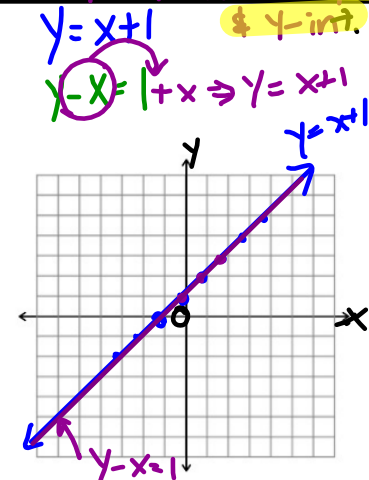
## No Solution

because the 2 lines Never intersect.  
\* Parallel lines have the Same Slope \*



## Infinite Solutions

because they intersect (Share) all the Same points  
\* when in  $y = mx + b$  they have same slope \*



May 4-7:35 AM

