

Quick Notes For Graphing

$y = mx + b$ on Calc

- Equations Must be in $y =$ form
- ALWAYS copy down table (min. of 3 points)
- Remember Arrows and labels

Oct 10-8:04 AM

Slope-intercept Form: $y = mx + b$

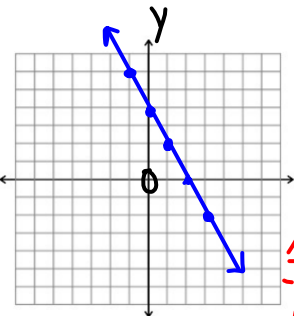
Standard Form: $Ax + By = C$

↳ Ex: $4x + 2y = 8$ ← Standard Form

$$\begin{array}{r} 4x + 2y = 8 \\ -4x = -4x \\ \hline 2y = -4x + 8 \\ \frac{2y}{2} = \frac{-4x}{2} + \frac{8}{2} \\ y = -2x + 4 \end{array}$$

← Slope-intercept

Graph this Form



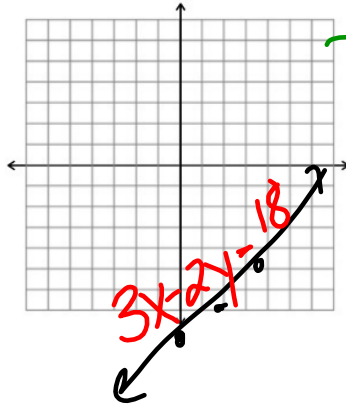
x	y
-1	6
0	4 ← y-int
1	2
2	0 ← x-int
3	-2

Oct 10-8:08 AM

Examples

$$y = -\frac{1}{2}x + 5$$

X	Y
-2	6
0	5
2	4



$$3x - 2y = 18$$

$$\begin{array}{r} -3x \\ \hline \end{array}$$

$$\frac{-2y}{-2} = \frac{-3x + 18}{-2}$$

$$y = 1.5x - 9$$

x	y
0	-9
2	-6
4	-3
6	0

Oct 10-8:12 AM