

## Adding & Subtracting Rational Numbers 11/9 (Word Problems)

Key Words

Add	Subtract
<p>Sum Altogether total in all</p> <p style="color: red;">Positive Words</p>	<p>Difference How Many/much more left over/remain</p> <p style="color: red;">Negative words</p>

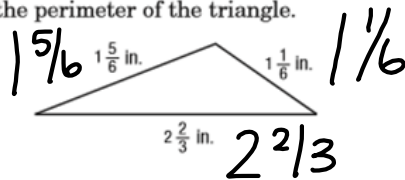
\* Don't forget to Label \*

Nov 5-12:01 PM

<p><b>GRADES</b> If <math>\frac{1}{3}</math> of the students got an A And <math>\frac{2}{5}</math> of them got a B, what fraction of the students got an A or a B?</p> <p style="text-align: center;"><math>\frac{1}{3} + \frac{2}{5} = \frac{11}{15}</math> of the students</p>	<p><b>WATER AEROBICS</b> If <math>\frac{5}{8}</math> of the people in a water aerobics class are over age 65 and <math>\frac{1}{4}</math> of the people in the class are under age 40, what fraction of the people in the class are either over 65 or under 40?</p> <p style="text-align: center;"><math>\frac{5}{8} + \frac{1}{4} = \frac{7}{8}</math> of the people</p>
<p><b>RUNNING</b> On Monday, Deborah ran <math>3\frac{2}{5}</math> miles and on Tuesday she ran <math>4\frac{1}{5}</math> miles. How many miles did she run on these two days together?</p> <p style="text-align: center;"><math>3\frac{2}{5} + 4\frac{1}{5} = 7\frac{3}{5}</math> miles</p>	<p><b>PRINTING</b> Swamee and Luigi were printing calendars. Swamee used <math>2\frac{1}{2}</math> ink cartridges while Luigi used <math>1\frac{3}{4}</math> ink cartridges. How many more ink cartridges did Swamee use than Luigi?</p> <p style="text-align: center;"><math>2\frac{1}{2} - 1\frac{3}{4} = \frac{3}{4}</math> of a Cartridge</p> <p style="text-align: center;"><math>2\frac{2}{4} - 1\frac{3}{4}</math> <math>\frac{10}{4} - \frac{7}{4}</math></p>

Nov 4-10:51 AM

11. GEOMETRY Find the perimeter of the triangle.



$$1\frac{5}{6} + 1\frac{1}{6} + 2\frac{2}{3} = 5\frac{2}{3} \text{ in}$$

12. KNITTING Nastia knitted two scarves for her dolls. One was  $8\frac{3}{4}$  inches long. The other was  $1\frac{1}{2}$  inches shorter than the first. How long was the second scarf?

$$8\frac{3}{4} - 1\frac{1}{2} = 7\frac{1}{4} \text{ in.}$$

Nov 5-12:01 PM

A hybrid car's gas tank can hold  $11\frac{9}{10}$  gallons of gasoline. It contains  $8\frac{3}{4}$  gallons of gas already. How much more gasoline is needed to fill the tank?

$$11\frac{9}{10} - 8\frac{3}{4}$$

$$3\frac{3}{20} \text{ gallons}$$

Nov 5-12:25 PM