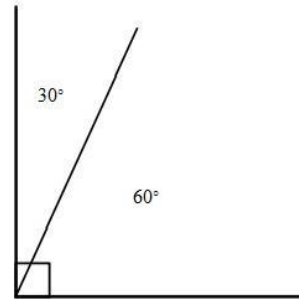
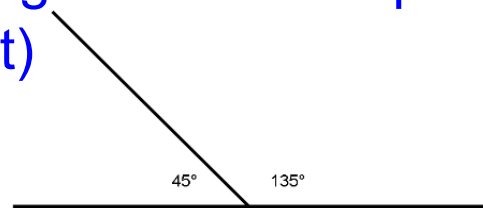


Complementary & Supplementary Angles

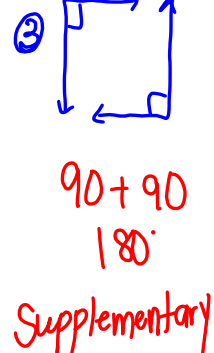
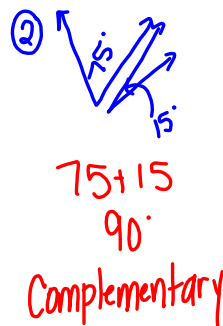
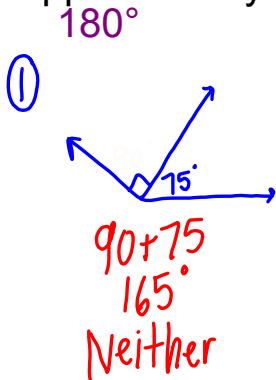
Complementary Angles - 2 angles that add up to 90° (Think "C" for Corner)



Supplementary Angles - 2 angles that add up to 180° (Think "S" for straight)

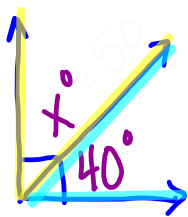


Identify if the two angles are Complementary, Supplementary or Neither.



Find the missing angle measure

①



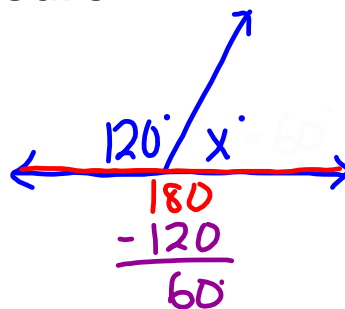
$$\begin{array}{r} 90 \\ - 40 \\ \hline \end{array}$$

$$\boxed{50^\circ}$$

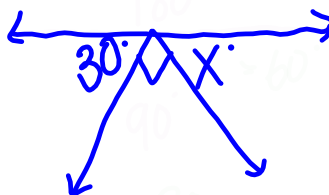
②

$$C = 90^\circ$$

$$S = 180^\circ$$



③

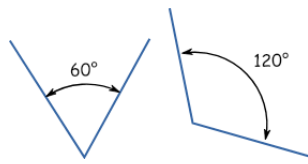


To Find a missing angle's measure:

1. Figure out if the angles are supplementary (180°) or Complementary (90°)
2. Subtract the given angle from 180 (supplementary/straight line) or from 90 (complementary/right angle)

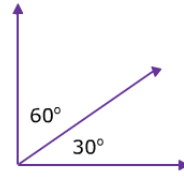
On Own:

Complementary, Supplementary or neither?



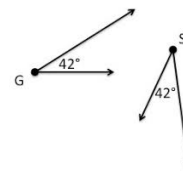
$$60 + 120 = 180^\circ$$

Supplementary



$$60 + 30 = 90^\circ$$

Complementary



$$42 + 42 = 84^\circ$$

Neither

Find the missing angle measure:

